



Cutlerease® Stand

HOW TO ASSEMBLE GUIDE

The Cutlerease® stand is easy to assemble. Let us show you how to assemble your new stand with this simple easy to follow guide.



*Cutlerease® base not included

Content of the box

Here's all the parts that are in your box. Please make sure to check that everything is there.

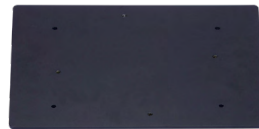
- 1 1 base
- 2 1 round plate
- 3 1 rectangular plate
- 4 1 black tube
- 5 1 metal rod
- 6 4 metal screws
- 7 4 blue anchors and #10 screws
- 8 4 feet adjusters



1



2



3



4



5



6



7



8

What you will need (not included)

Here's what you need in order to assemble your Cutlerease® stand easily.

- Adjustable wrench
- Hammer

- Phillips screwdriver

Cutlerease® base & towers (sold separately)

Cutlerease® dispensing system gives you the ability to mix and match which cutlery to use in your base. Don't forget that only Cutlerease® cutlery can be used in this dispensing system.



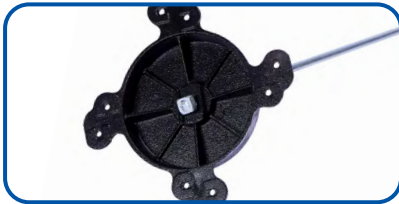
Let's get started!

STEP 1

- 1A Remove nut from the **METAL ROD** (keep it nearby you will need this again).



- 1B Insert **METAL ROD** into the **ROUND PLATE** (threaded end first).



- 1C Place the **BLACK TUBE** over **METAL ROD**.



STEP 4

- 4A Flip over your Cutlerease® base – you should see 4 small eyelet holes. If they are punched out – proceed to the next step.
- 4B If they are not, simply use a screwdriver to punch them out.



STEP 2

- 2A Keep your partially assembled stand upside down until step 6 (round plate on floor).
- 2B Place the **BASE** onto the **BLACK TUBE** and using a wrench secure with the nut you previously removed.



- 2C Screw in the 4 **FEET ADJUSTERS** to the **BASE**



STEP 5

- 5A Remove the **BLUE ANCHORS** from **#10 SCREWS** and place them in the **BASE** of your dispenser

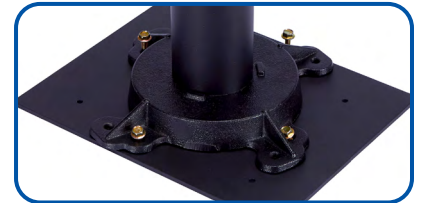


- 5B Lift the partially assembled stand (still in an upside down position) and place it on the Cutlerease® base lining up the mounting locations with the **BLUE ANCHORS**.
- 5C Insert your **#10 SCREWS** and tighten.



STEP 3

- 3A Lift the partially assembled stand (still keeping it upside down) and place onto your **RECTANGULAR PLATE**.
- 3B Using your 4 **METAL SCREWS** connect the **ROUND PLATE** with the **RECTANGULAR PLATE**.



 Learn more about Cutlerease through our video here!

STEP 6

- Carefully turn your fully assembled stand over and complete your set up adding Cutlerease® towers of your choice!